



National Heart, Lung,
and Blood Institute

Advancing The Science of Community-Engaged Health Disparities Research Virtual Workshop



November 14-15, 2022
Time: 11:00 am - 4:00 pm EST

Program Booklet

Workshop Agenda: Monday, November 14th, 2022

Time	Event
11:00 am	<p>Opening Remarks Fernando Bruno, MD, MPH. AAAS Science and Technology Policy Fellow, Health Scientist, Center for Translation Research and Implementation Science, National Heart, Lung, and Blood Institute (NHLBI), National Institutes of Health, USA</p>
11:05 am	<p>Welcome Address Eliseo Perez-Stable, MD Director, National Institute on Minority Health and Health Disparities (NIMHD), national Institutes of Health, USA</p>
11:15 am	<p>Keynote Address: Sylvia Trent Adams, PhD, RN, FAAN, FNAP. President, The University of North Texas Health Science Center at Fort Worth (UNTHS) The Past, Present and Future of Community-Engaged Health Disparities Research</p>
11:45 am	<p>Break</p>
12:00 pm	<p>Session 1: Community Engagement to Reduce Health Disparities - Lessons From a Pandemic Moderator: Crystal Hill-Pryor, PhD, MPH. Program Director, Translational Blood Science and Resources Branch (TRRB), Division of Blood Diseases and Resources (DBDR) National Heart, Lung, and Blood Institute (NHLBI), National Institutes of Health, USA</p> <ul style="list-style-type: none"> • Chair: Rita Carreon, BS, cHAP. Vice-President, Health at UnidosUS (formerly National Council of La Raza) • Panelist: Lisa Macon Harrison, MPH. Vice-President/ President Elect, The National Association of County and City Health Officials (NACCHO) • Panelist: Al Richmond, MSW. Executive Director of Community-Campus Partnerships for Health (CCPH) • Panelist: Grace Ma, PhD. Associate Dean, Health Disparity; Director and Professor, Center for Asian Health; Vice Chair, Department of Urban Health & Population Science Professor, Urban Health & Population Science, Temple University <p>Moderated Q&A</p>

Workshop Agenda: Monday, November 14th, 2022

Time	Event
1:00 pm	<i>Lunch Break</i>
1:30 pm	<p>Session 2: Planning for and Measuring Bi-Directional Community Engagement</p> <p>Moderator: Rebecca Roper. Program Official, Center for Translational Research and Implementation Science, National Heart, Lung, and Blood Institute (NHLBI), National Institutes of Health, USA</p> <ul style="list-style-type: none">• Chair: Sergio Aguilar-Gaxiola, MD, PhD. Professor of Clinical Internal Medicine, Founding Director, Center for Reducing Health Disparities (CRHD), and Director of the Community Engagement Program of the UC Davis Clinical and Translational Center.• Panelist: Donald Nease, MD. Green-Edelman Chair for Practice-Based Research Professor and Vice Chair for Community Dept. of Family Medicine• Panelist: Charlene Barrientos-Ortiz. Community Representative, Colorado CEAL Team• Panelist: Sol Sandoval. Community Representative, Colorado CEAL Team• Panelist: Patrik Johansson, MD, MPH. Director of Practice Based Research Network, Partnerships for Native Health; Associate Professor, Institute for Research and Education to Advance Community Health, University of Washington (WSU) <p>Moderated Q&A</p>
2:30 pm	<i>Break</i>

Workshop Agenda: Monday, November 14th, 2022

Time	Event
2:45 pm	<p>Session 3: Addressing Health Inequities Through Community Engagement</p> <p>Moderator: Mary Masterson, PhD. Health Science Administrator, Center for Translation Research and Implementation Science, National Heart, Lung, and Blood Institute (NHLBI), National Institutes of Health, USA</p> <ul style="list-style-type: none"> • Chair: Keith C. Ferdinand, MD, FACC, FAHA, FASH, FNLA. Professor of Medicine; Gerlad S. Berenson Chair in Preventative Cardiology, Tulane University School of Medicine • Panelist: Valarie Blue Bird Jernigan, DrPH, MPH. Professor of Rural Health; Executive Director, Center for Indigenous Health Research and Policy Center for Indigenous Health Research and Policy, Oklahoma State University • Panelist: Jill Johnston, PhD. Associate Professor and Director of Community Engagement in the USC, MADRES Program • Panelist: Pearl McElfish, PhD, MBA. Associate Director of Community Outreach and Engagement at Winthrop P. Rockefeller Cancer Institute, University of Arkansas for Medical Sciences (UAMS) <p>Moderated Q&A</p>
3:45 pm	<p>Closing Remarks</p> <p>Patricia Jones, DrPH, MPH, MS, MBA. Director, Office of Special Populations, National Institute on Aging, National Institutes of Health, USA.</p>
3:55 pm	<p>Thank You Remarks</p> <p>Maliha Ilias, PhD. Program Director, Health Inequities and Global Health Branch, Center for Translation Research and Implementation Science, National Heart, Lung, and Blood Institute, National Institutes of Health, USA</p>
4:00 pm	<p>Day 1 of Workshop Ends</p>

Workshop Agenda: Tuesday, November 14th, 2022

Time	Event
11:00 am	<p>Opening Remarks Maliha Ilias, PhD. Program Director, Health Inequities and Global Health Branch, Center for Translation Research and Implementation Science, National Heart, Lung, and Blood Institute, National Institutes of Health, USA</p>
11:05 am	<p>Welcome Address George Mensah, MD, FACC. Director, Center for Translation Research and Implementation Science, National Heart, Lung, and Blood Institute (NHLBI), National Institutes of Health, USA</p>
11:15 am	<p>Keynote Address Lisa Angeline Cooper, MD, MPH. Bloomberg Distinguished Professor, Equity in Health and Healthcare; Professor of Medicine, Johns Hopkins Future Directions for Community-Engaged Health Disparities Research</p>
11:45 am	<p>Break</p>
12:00 pm	<p>Session 4: Importance of Community-Engaged Research in Combatting Global Health Disparities Moderator: Makeda Williams, PhD, MPH. Global Health Program Director, Center for Translational Research and Implementation Science, National Heart, Lung, and Blood Institute (NHLBI), National Institutes of Health, USA</p> <ul style="list-style-type: none"> • Chair: Marcella Nunez-Smith, MD, MHS. Associate Dean for Health Equity Research, Yale School of Medicine • Panelist: Ana Mocumbi, MD, PhD. Head of the Division of Chronic and Non-Communicable Diseases at the National Health Institute in Mozambique and an Associate Professor of Clinical Cardiology at Eduardo Mondlane University (UEM) • Panelist: Marshall Tulloch Reid, MBBS, MPhil, DSc, FACE. Director, Caribbean Institute for Health Research • Panelist: Nikhil Tandon, MBBS, MS, PhD. Professor, Department of Endocrinology and Metabolism, All India Institute of Medical Sciences; Head, Capacity Building, Centre for Chronic Disease Control, New Delhi, India; HyTREC India <p>Moderated Q&A</p>

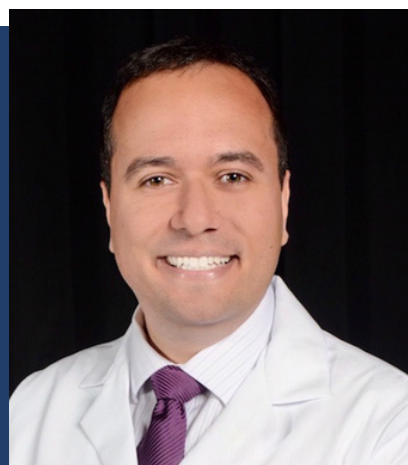
Workshop Agenda: Tuesday, November 14th, 2022

Time	Event
1:00 pm	<i>Lunch Break</i>
1:30 pm	<p>Session 5: Data Science and Community Engagement Efforts - Past, Present and Future</p> <p>Moderator: Emir Khatipov, PhD. Program Director, Center for Translation Research and Implementation Science, National Heart, Lung, and Blood Institute (NHLBI), National Institutes of Health, USA</p> <ul style="list-style-type: none">• Chair: Phil Bourne, PhD. Stephenson Dean School of Data Science Professor Department of Biomedical Engineering, University of Virginia. (Former Assoc Dir for Data Science at NIH, now in UVA)• Panelist: Ali Mokdad, PhD. Chief Strategy Officer, Population Health University of Washington and Professor, Health Metrics Sciences, Institute for Health Metrics and Evaluation, School of Medicine• Panelist: Irene Dankwa-Mullan, MD, MPH. Chief Health Equity Officer, Deputy Chief Health Officer, Lead Scientific Officer, Merative (Formerly IBM Watson Health) <p>Moderated Q&A</p>
2:30 pm	<i>Break</i>

Workshop Agenda: Tuesday, November 14th, 2022

Time	Event
2:45 pm	<p>Session 6: Advancing Inclusive Excellence in Community-Engaged Research</p> <p>Moderator: Desiree L. Salazar, PhD. Diversity, Equity, and Inclusion Coordinator for Extramural Programs, Center for Translation Research and Implementation Science, National Heart, Lung, and Blood Institute, National Institutes of Health, USA</p> <ul style="list-style-type: none"> • Chair: Monica Webb Hooper, PhD. Deputy Director, Office of the Director, National Institute on Minority Health and Health Disparities (NIMHS), National Institutes of Health, USA • Panelist: Harolyn M.E. Belcher, MD, MHS. Vice President and Chief Diversity Officer, Kennedy Krieger Institute • Panelist: Marie Plaisime, PhD, MPH. FXB Health and Human Rights Fellow and National Science Foundation (NSF) Post-Doctoral Fellow, Harvard University • Panelist: Giselle Corbie, MD, MSc. Kenan Distinguished Professor of Social Medicine, Director, Center for Health Equity Research; Professor of Internal Medicine, University of North Carolina <p>Moderated Q&A</p>
3:45 pm	<p>Closing Remarks</p> <p>Xinzhi Zhang, MD, PhD, FACE, FRSM. Chief, Health Inequities and Global Health Branch, Center for Translation Research and Implementation Science, National Heart, Lung, and Blood Institute, National Institutes of Health, USA</p>
3:55 pm	<p>Thank You Remarks</p> <p>Fernando Bruno, MD, MPH. AAAS Science and Technology Policy Fellow, Health Scientist, Center for Translation Research and Implementation Science, National Heart, Lung, and Blood Institute (NHLBI), National Institutes of Health, USA</p>
4:00 pm	<p>Day 2 of Workshop Ends</p>

Workshop Planning Committee



Fernando Bruno, MD, MPH Workshop Planning Committee Co-Chair

*AAAS Science and Technology Policy Fellow
Center for Translation Research and Implementation Science (CTRIS),
National Heart, Lung, and Blood Institute (NHLBI), National Institutes of Health*

Dr. Fernando Bruno (MD, MPH) is a Science & Technology Policy Fellow (STPF) of the American Association for the Advancement of Science (AAAS), serving his fellowship at the National Institutes of Health (NIH). He is detailed to the Center for Translation Research and Implementation Science (CTRIS), which integrates the National Heart, Lung and Blood Institute (NHLBI). As an STPF AAAS Fellow, he works on health and science policy and research to identify the best strategies for successfully integrating evidence-based interventions within clinical, public, and global health settings. Furthermore, Dr. Bruno is an Adjunct Associate Professor at the Touro College of Osteopathic Medicine, and an Adjunct Associate Professor in the Department of Public Health, Division of Epidemiology, at New York Medical College. His previous scholarly activities include experiences in the United States, Brazil, Canada, India, and Lebanon. He has been involved in multiple research projects, including the pathogenesis of cerebral malaria, neurovascular diseases on the regeneration of the central nervous system, and value-based care to address healthcare disparities and increase access to care. He has led studies on best practices in medical education, focusing on assessing the core competencies of medical trainees and the improvement of medical curricula. Dr. Bruno received his Doctor of Medicine degree and general practitioner certification from the Universidade Federal do Rio de Janeiro, his Master of Public Health degree from the Harvard T. H. Chan school of Public Health and did his post-doctoral fellowship in pathology and tropical medicine at the Albert Einstein College of Medicine.



Maliha Ilias, PhD Workshop Planning Committee Co-Chair

*Program Director, Health Inequities and Global Health Branch
Center for Translation Research and Implementation Science (CTRIS),
National Heart, Lung, and Blood Institute, National Institutes of Health*

Dr. Maliha Ilias currently serves as a Program Director in the Health Inequities and Global Health Branch within the Center for Translation Research and Implementation Sciences at the National Heart, Lung and Blood Institute. Dr. Ilias' portfolio includes grants and cooperative agreements related to global and domestic health equity research. She also serves as the Scientific Program Lead for the Community Engagement Alliance Consultative Resource (CEACR). Dr. Ilias heads a team that has launched the Health Equity Research Outreach (HERO) seminar and lecture series which seeks to promote the work and voices of various stakeholders involved in health equity research. Previously, she was a part of the Bacteriology and Mycology Branch in the Division of Microbiology and Infectious Diseases at the National Institute of Allergy and Infectious Diseases. There she gained more than ten years of basic and translational experience planning and directing a program of research contracts, grants and cooperative agreements in infectious diseases, first as a Product Development Specialist for diagnostics, therapeutics and vaccines, and then as the Program Officer for Lyme Disease research. She has a PhD in reproductive health and health communication from Johns Hopkins School of Public Health, with a focus on maternal and neonatal health, especially on the impact of chronic diseases, mental health disorders and health behaviors on health outcomes in mothers and neonates. She is also experienced in health communications research, including developing, establishing and evaluating health communication programs, especially in low and middle-income countries.

Workshop Planning Committee



Mary Masterson, PhD, MS

*Health Science Administrator/Program Official
Center for Translation Research and Implementation Science,
National Heart, Lung, and Blood Institute, National Institutes of Health*

Dr. Masterson is a Program Official within the NIH's National Heart Lung Blood Institutes' Center for Translational Research and Implementation Science (CTRIS). CTRIS's primary mission is to plan, foster, and support research focused on implementing evidence-based interventions within clinical/public health settings in the United States and abroad. She comes to CTRIS with a research background in biomedical sciences, including immunology, infectious diseases, vaccine therapeutics development, and animal models. Within CTRIS, she oversees, manages, and administers a research portfolio of late-stage implementation science studies focused on heart, lung, blood, and sleep disorders affecting vulnerable populations. Notably, a majority of these cooperative agreements, research grants, and training awards include community engagement principles to support the further development of feasible, acceptable, and sustainable interventions and strategies in real world settings.



Crystal Hill-Pryor, PhD, MPH

Program Director, Translational Blood Science and Resources Branch (TRRB), Division of Blood Diseases and Resources (DBDR) National Heart, Lung, and Blood Institute (NHLBI), National Institutes of Health, USA

Dr. Hill-Pryor, who recently joined the Translational Blood Science and Resources Branch of DBDR, brings with her a wealth of experience as a former Health Science Administrator for the Battlefield Resuscitation for Immediate Stabilization of Combat Casualty (BRISCC) portfolio for the U.S. Army Medical Research and Materiel Command in Fort Detrick, Maryland. Prior to that she served for many years as a Health Science Administrator for the Hemorrhage and Resuscitation Research Portfolio Manager Combat Casualty Care Research Program, U.S. Army Medical Research and Materiel Command. Dr. Hill Pryor brings significant expertise in the areas of blood products, hemorrhage pharmaceuticals and hemorrhage control. Dr. Crystal Hill-Pryor's areas of expertise here at NIH include management of training grants, fellowships, and cooperative agreements in the basic and translational scientific research areas of thrombosis; hemostasis; vascular biology, and blood substitutes with focus on emerging technologies, biological products and medical devices.

Dr. Hill Pryor received a Bachelor's of Science in Chemistry and a PhD in Physiology from Wayne State University. She completed her post-doctoral training in the Department of Physiology at the Medical College of Georgia and also received her Masters of Public Health from the Medical College of Georgia.

Workshop Planning Committee



Rebecca Roper

*Project Officer, Implementation Science Branch
Center for Translation Research and Implementation Science,
National Heart, Lung, and Blood Institute, National Institutes of Health*

Rebecca Roper, MS, MPH, has more than 20 years of experience in DHHS extramural grant programs. She serves as Project Officer in the Implementation Science Branch in the NHLBI's Center for Implementation Science (CTRIS). Rebecca's established areas of expertise include: providing technical assistance to new investigators; multi-level clinical trials; health information technology; primary-care prevention; implementation research to improve delivery of evidence-based practices; community engagement for health improvement; development of professional society-approved training materials for clinician-researchers; and, the production of award-winning videos showcasing impact of late-stage implementation research.



Emir Khatipov, PhD

*Program Officer
Center for Translation Research and Implementation Science,
National Heart, Lung, and Blood Institute, National Institutes of Health*

Dr. Khatipov is the Program Officer at CTRIS, where he supports Data Science efforts across NHLBI, NIH, and other Federal Agencies. In his prior programmatic role at the National Institute of Dental and Craniofacial Research (NIDCR) he was directing the Data Science Program focused on challenges in integrating and analyzing high-volume and diverse data to better understand dental, oral, and craniofacial (DOC) biology and diseases, in silico data analyses of gene regulatory networks, systems biology studies, and artificial intelligence and advance statistics projects aimed at solving specific DOC questions, as well as developing resources for basic and/or translational research. In addition to being involved in many trans-NIH working groups, he has supported various databases, educational and outreach efforts at the National Center for Biotechnology Information (NCBI), developed Next Generation Sequencing data analysis pipelines and managed sequencing projects at the National Cancer Institute, supported biomedical terminology development, informatics, and training at the National Library of Medicine, and lead Bioinformatics Support Program at the NIH Library.

Welcome & Keynote Speakers - Day 1



Eliseo J. Pérez-Stable, MD

Welcome Address

Director, National Institute on Minority Health and Health Disparities (NIMHD), National Institutes of Health, USA

Dr. Eliseo Pérez-Stable is Director of the National Institute on Minority Health and Health Disparities (NIMHD) at the National Institutes of Health (NIH). He earned his B.A. in chemistry in 1974 and M.D. in 1978 from the University of Miami. He then completed his primary care internal medicine residency and a research fellowship in general internal medicine at University of California, San Francisco (UCSF) before joining the faculty as an assistant professor in 1983. Dr. Pérez-Stable practiced primary care internal medicine for 37 years at UCSF. His research interests have centered on improving the health of individuals from racial and ethnic minority communities through effective prevention interventions, understanding underlying causes of health disparities, and advancing patient-centered care for underserved populations. Recognized as a leader in Latino health care and disparities research, he spent 32 years leading research on smoking cessation and tobacco control in Latino populations in the United States and Latin America. Dr. Pérez-Stable has published more than 300 peer-reviewed papers.



Sylvia Trent-Adams, PhD, RN, FAAN, FNAP

Keynote Address Speaker

President, The University of North Texas Health Science Center at Fort Worth (UNTHS)

Dr. Sylvia Trent-Adams is the President, of the University of North Texas Health Science Center (HSC). As President, Dr. Trent-Adams is responsible for the overall leadership and management of all campus programs, services and activities in every area of the university, including academic affairs, administration, strategic planning, student services, financial management, external relations and fundraising. Prior to joining HSC, Dr. Trent-Adams served as the Principal Deputy Assistant Secretary for Health (PDASH) and Deputy Surgeon General at the US Department of Health and Human Services. Throughout her career, Dr. Trent-Adams has focused on improving access to care for poor and underserved communities. As both a clinician and administrator, she has made a direct impact on building systems of care to improve public health for marginalized populations domestically and internationally.

Prior to serving as Deputy Surgeon General, Dr. Sylvia Trent-Adams was Deputy Associate Administrator for the HIV/AIDS Bureau, Health Resources and Services Administration. Through this role, she helped manage the \$2.3 billion Ryan White program, which funds medical care, treatment, referrals and support services for uninsured and underserved people living with HIV disease as well as training for health care professionals. Dr. Trent-Adams has been elected as a fellow in several organizations, including the American Academy of Nursing (2014), National Academy of Medicine (2018) and the National Academies of Practice (2018). She served as a nurse officer in the United States Army and United States Public Health Service Commissioned Corps.

Session 1 Panelist



Crystal Hill-Pryor, PhD, MPH NIH Moderator

Program Director, Translational Blood Science and Resources Branch (TRRB), Division of Blood Diseases and Resources (DBDR) National Heart, Lung, and Blood Institute (NHLBI), National Institutes of Health, USA

(For Bio See Planning Committee Section)



Rita Carreon, BS, cHAP Chair

Vice-President, Health at UnidosUS (formerly National Council of La Raza)

Rita Carreón is Vice President for Health at UnidosUS, a national Hispanic civil rights and advocacy organization based in Washington, DC. Ms. Carreón oversees the organization's strategic direction in health, including community engagement and programming, addressing social determinants of health, and advancing health equity. She currently helps lead a cross-component team on the public health response for COVID 19 through UnidosUS Esperanza Hope for All campaign. She works in close partnership with UnidosUS Affiliates, public and private partners, and other stakeholders to advance access to quality and equitable health care. Previously, she was Vice President of Clinical Strategies and Health Care Equity at America's Health Insurance Plans (AHIP) and led health programming at the National Association of Community Health Centers, Inc.

Ms. Carreón expertise and interests include improving health and quality of care for diverse communities. She advises organizations on envisioning where health happens, including advancing a culture of health with the Robert Wood Johnson Foundation, in addition to the American Cancer Society and American Heart Associations' Health Equity Councils, Pfizer's Multicultural Advisory Council, the Rockefeller Foundation Vaccine Equity Initiative, and National COVID-19 Resiliency Network (NCRN). Ms. Carreón is also co-chair of the steering committee for the National Institutes of Health's Community Engagement Alliance Against COVID 19 Disparities (CEAL Alliance). She is a Carol Emmott Foundation Fellow alumna and a member of CHIEF and the Women of Impact for Health Care – a group of female health care executives with a shared goal to realign the health care system to meet the needs of all Americans, recognizing that people who need care come from all walks of life. Ms. Carreón is a certified health insurance executive, holds a post graduate certificate, health care administration and Bachelor of Science degrees in Community and School Health from California State University, Long Beach.

Session 1 Panelist



Lisa Macon Harrison, MPH Panelist

Vice-President/President Elect, The National Association of County and City Health Officials (NACCHO)

Lisa Macon Harrison, local health director in Granville and Vance Counties in North Carolina, has worked at the intersection of public health research and practice in North Carolina since 1995. Ms. Harrison's areas of expertise and public health leadership and training include:

- Advocating for the Public Health Workforce and Rural Health
- Establishing the NC Practice-Based Research Network (PBRN) and Rural Academic Health Department Models
- Training the Public Health Workforce in Evidence-Based Public Health Approaches
- Directing the NC Office of Healthy Carolinians and Health Education at NCDPH
- Leading the North Carolina Public Health Incubator Collaboratives Program
- Directing the Southeast Public Health Leadership Institute (SEPHLI)
- Facilitating a 5-county regional Stepping Up Initiative in northeastern NC to better address and treat mental health and substance use disorder needs among those who are justice-involved
- Creating integrated care models for individuals and improving systems of care for communities
- Addressing health equity during the COVID-19 pandemic response in Granville and Vance Counties

Ms. Harrison previously worked with the NC Center for Public Health Quality, the NC Division of Public Health, and the Centers for Disease Control and Prevention on a Public Health Infrastructure grant for performance improvement. Lisa has a Bachelor of Science degree in Public Health, a Bachelor of Arts in Public Policy and a Master of Public Health (MPH) from the Gillings School of Global Public Health at UNC Chapel Hill. She is a co-author on more than 30 peer-reviewed publications in public health. Lisa remains associated with UNC-Chapel Hill as an adjunct research associate in the Public Health Leadership Program, and as a consultant adjunct with the Duke University School of Nursing. Lisa helped establish the Rural Academic Health Department model for GVPH which receives approximately \$1,000,000 per year in grant funds. She served as President of the NC Public Health Association in 2015 and was elected to represent five southern states on the Board of Directors of the National Association of County and City Health Officials (NACCHO) 2018-2022 where she now serves as Past-President. Lisa was also recently invited to serve as a member of the NC Institute of Medicine (NCIOM) for a five-year term beginning in 2019 and will co-chair the NCIOM "Future of Public Health" task force in 2021.

Session 1 Panelist



Al Richmond, MSW Panelist

Executive Director of Community-Campus Partnerships for Health (CCPH)

Al Richmond is Executive Director of Community-Campus Partnerships for Health (CCPH), an international health equity and justice organization celebrating its 25th anniversary. The work of CCPH has been central to the National Institutes of Health's response to the COVID-19 pandemic, including co-lead of the community engagement core of the RADxUP Coordination Data Collection Center (CDCC). In this role, Al leads the organization's work to increase community engagement in the 100+ testing sites affiliated with the CDCC. At the state level Al serves Co-PI of the North Carolina CEAL project, Increasing Trustworthiness through Engaged Action and Mobilization (I-TEAM). CCPH is also leading efforts to engage communities disproportionately impacted by COVID in the RECOVER Project. Additionally, Al provides executive leadership to multiple CCPH-sponsored initiatives to increase community engagement for the purpose of advancing health equity.



Grace Ma, PhD Panelist

Associate Dean for Health Disparities, Founding Director of Center for Asian Health, Laura H. Carnell Professor at Lewis Katz School of Medicine, and Director of Community-Based Research at FCCC, Temple University

Dr. Ma is Associate Dean for Health Disparities, Founding Director of Center for Asian Health, Laura H. Carnell Professor at Lewis Katz School of Medicine, and Director of Community-Based Research at FCCC, Temple University. Dr. Ma is a nationally recognized public health scientist, leader and pioneer in cancer and health disparities research among underserved vulnerable racial/ethnic minority populations. In 2000, she established Center for Asian Health among nation's first centers dedicated to reducing cancer and health disparities in underserved AAPI. Dr. Ma has made seminal contributions in improving health equity and reducing health disparities. Over the past 22 years, Dr. Ma as Principal Investigator has directed 4 cycles of NCI/NIH funded cancer health disparities research centers/networks in the U.S. east region of DC/MD, PA, NJ and NYC, which established robust partnerships with over 400 community/faith-based organizations (CBOs) and clinical partners that predominately serve racial/ethnic minorities. Her community-based participatory research (CBPR) and patient-centered outcome research focus on improving early detection, patient navigation, cancer prevention and control (Hepatitis-related liver cancer, cervical, breast, lung and colorectal cancers) and access/quality of healthcare in underserved and racial/ethnic minorities. Dr. Ma has directed more than 100 intervention or observational longitudinal studies, including large-scale cluster randomized intervention trials, implementation and dissemination studies at worksites, community health centers, primary care clinics, CBOs and churches. Dr. Ma has mentored over 260 junior faculty, post-doctoral, doctoral and master minority fellows that created a pipeline of diverse workforce of researchers in health disparities. Dr. Ma currently Co-Chairs NIH CEAL-AANHPI Interest Group.

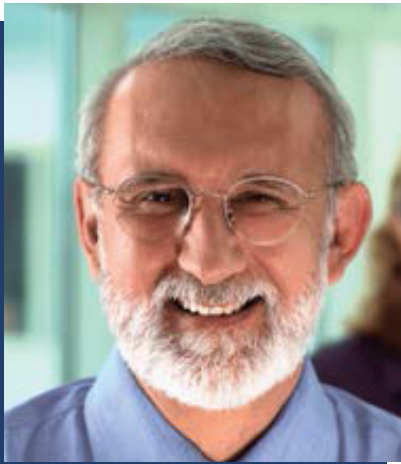
Session 2 Panelist



Rebecca Roper
NIH Moderator

Program Official, Center for Translation Research and Implementation Science, National Heart, Lung, and Blood Institute (NHLBI), National Institutes of Health, USA

(For Bio See Planning Committee Section)



Sergio Aguilar-Gaxiola, MD, PhD
Session Chair

Professor of Clinical Internal Medicine, Founding Director, Center for Reducing Health Disparities (CRHD), and Director of the Community Engagement Program of the UC Davis Clinical and Translational Center

Dr. Aguilar-Gaxiola is an internationally renowned expert on mental health in ethnic populations. As on-site principal investigator of the Mexican American Prevalence and Services Survey – the largest mental health study conducted in the United States on Mexican Americans – he identified the most prevalent mental health disorders in the Mexican-origin population in California's central valley; showed that the rate of disorders increases the longer the individual resides in the United States; and demonstrated that children of immigrants have even greater rates of mental disorders. From this study, he developed a model of service delivery that increased access to mental health services among the Central Valley's low-income, underserved, rural populations. Dr. Aguilar-Gaxiola conducts cross-national epidemiologic studies on the patterns and correlates of psychiatric disorders in general population samples. He is the coordinator for Latin America and the Caribbean of the World Health Organization's Mental Health Survey and coordinates the work of the National Mental Health Institute surveys in Mexico, Columbia, Brazil, Peru, Costa Rica and Portugal. He also develops culturally and linguistically sensitive diagnostic mental health measures and translates mental health research into practical information for consumers and their families, health professionals, service administrators and policy makers.

Session 2 Panelist



Donald E. Nease Jr., MD Panelist

Green-Edelman Chair for Practice-Based Research Professor and Vice Chair for Community | Dept. of Family Medicine

Dr. Nease is a Professor of Family Medicine at the University of Colorado – Anschutz Medical Campus, where he serves as the Green-Edelman Chair for Practice Based Research, Director of Community Engagement for the Colorado Clinical and Translational Sciences Institute, Vice Chair for Community in the Department of Family Medicine and Director of the SNOCAP Practice Based Research Network Collaborative. Dr. Nease’s passion is to improve health in partnership with communities, patients, clinicians and their practices. He works this territory from the level of individual interactions to community to community and populationbased interventions.



Charlene Barrientos-Ortiz Panelist

Community Representative, Colorado CEAL Team

Charlene Barrientos Ortiz is a program manager and community research liaison at the Colorado School of Public Health. She is a Colorado native with a background in nonprofit, social justice activism, and public health. She is well known for her work in eliminating health disparities, improving health equity, community-based participatory research, community engagement, and meeting and facilitation training. She has been very active in CO-CEAL: [Colorado COVID-19 Community Engagement Alliance](#)



Sol Sandoval Panelist

Community Representative, Colorado CEAL Team

A first-generation daughter of immigrants from Colima and Michoacán, Mexico—Sol Sandoval Tafoya is a fully bilingual Latina from a union family and a seasoned community leader who has been fighting for working people for over 20 years. Sol is a Chicana, community organizer, and former candidate for U.S. Congress in the Third Congressional District of Colorado. Upon graduating from Colorado State University Pueblo, Sol spent a decade with the Pueblo County Department of Social Services to give back to community because she knew from a young age that too many working families never get their fair shot and that the American Dream doesn’t come easy. She envisions a community where people who have not been given a seat at the table have allies and comunidad who will ensure that they are no longer left out of the decision making. Sol enjoys dancing, running and volunteers translating for monolingual Spanish speakers. Sol lives in Pueblo with her two children and her dog, Esteban—a rescue from Las Vegas, NM. **“Representation matters. We need to bring diversity; decision-makers who come from different walks of life. We need more women in places where decisions are being made.”**

Session 2 Panelist



Elmer Freeman, MA Panelist

Executive Director

Center for Community Health Education Research and Service, Inc.

Elmer Freeman is executive director of the Center for Community Health Education Research and Service, Inc., a national model partnership promoting academic-community engagement and research. He is a recognized expert in the application of models of community-based participatory research and principles to address disparities and inequalities in health and health care of underserved communities. Elmer is also an adjunct assistant professor and director of Urban Health Programs and Policy for the Bouvé College of Health Sciences at Northeastern University.



Patrick Johansson, MD, MPH Panelist

Director of Practice Based Research Network, Partnerships for Native Health;

Associate Professor, Institute for Research and Education to Advance Community Health, University of Washington (WSU)

Patrick Johansson, M.D., M.P.H., Director of NW HERON is an Associate Professor in the Elson S. Floyd College of Medicine at Washington State University. With NW HERON, he uses his expertise in conducting community-based participatory research and teaching partnerships among academic institutions, primary care clinics and local health departments in rural settings. His research focuses on chronic disease prevention and management in rural and Indigenous populations.

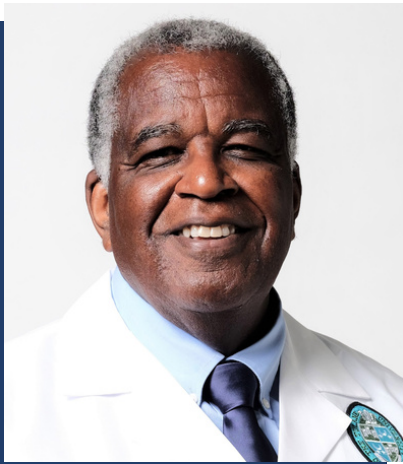
Session 3 Panelist



Mary Masterson, PhD, MS NIH Moderator

*Health Science Administrator/Program Official
Center for Translation Research and Implementation Science,
National Heart, Lung, and Blood Institute, National Institutes of Health*

(For Bio See Planning Committee Section)



Keith C. Ferdinand, MD, FACC, FAHA, FASH, FNLA Session Chair

Professor of Medicine; Gerald S. Berenson Chair in Preventative Cardiology, Tulane University School of Medicine

Dr. Ferdinand is Professor of Medicine at the Tulane University School of Medicine and previously Professor of Clinical Pharmacology at Xavier University, New Orleans and Clinical Professor of Medicine at Emory University, Atlanta, Georgia. Dr. Ferdinand received his medical degree from the Howard University College of Medicine in Washington, DC. He is board-certified in internal medicine and cardiovascular disease, certified in the subspecialty of nuclear cardiology, and a specialist in clinical hypertension. Dr. Ferdinand is a member of the Association of University Cardiologists, past Chair of the National Forum for Heart Disease and Stroke Prevention and prior Chief Science Officer and chair of the Association of Black Cardiologists (ABC). He has also served on the board of the American Society of Hypertension, the Southwest Lipid Association, and International Society of Hypertension in Blacks. He is presently on the board of the Partnership to Advance Cardiovascular Health, National Lipid Association, and the American Society for Preventive Cardiology. He is presently chair of the ABC Access to Care Initiative and co-chair of the ABC CME Committee. ABC Access since 2016 is a multi-organizational working group targeting disparities in the access to evidence-based medications and devices. He also serves the AHA National Hypertension Control Initiative (NHCI) Advisory Group, reflecting his unique perspective, experience, and expertise in hypertension. This group provides leadership and guidance to our national blood pressure initiative in the areas of clinical care and community health as an AHA cooperative agreement with the Office of Minority Health (OMH) and the Health Resources and Services Administration (HRSA). He serves advisor to the National Association of Community Health Centers Million Hearts initiative with the CDC.

Session 3 Panelist



Valerie Blue Bird Jernigan, DrPH, MPH Panelist

Professor of Rural Health; Executive Director, Center for Indigenous Health Research and Policy Center for Indigenous Health Research and Policy, Oklahoma State University

Dr. Valerie Blue Bird Jernigan is a professor of Medicine and Director of the Center for Indigenous Health Research and Policy at Oklahoma State University Center for Health Sciences. Dr. Jernigan received her doctorate in public health from the University of California, Berkeley, and completed a postdoctoral fellowship in cardiovascular disease prevention at Stanford University, where she also completed a degree in documentary filmmaking. Dr. Jernigan has been the PI or Co-I on more than 10 NIH-funded trials to improve food systems and health in Indigenous communities. She led the THRIVE study, the first randomized trial of healthy makeovers in tribally-owned convenience stores, the FRESH study, a farm-to-school intervention to support healthy eating patterns among Native American children, and a newly launched tribal community supported agriculture study to promote sustainable changes to the food environment and health in Osage Nation. Dr. Jernigan is the PI for the Center for Indigenous Innovation and Health Equity, funded by the Office of Minority Health, which supports community-based initiatives to restore traditional food systems and practices in American Indian, Alaska Native, and Native Hawaiian communities. Dr. Jernigan is a citizen of the Choctaw Nation of Oklahoma.



Jill Johnston, PhD Panelist

Associate Professor and Director of Community Engagement in the USC, MADRES program

Jill Johnston, PhD is an Associate Professor and Director of Community Engagement in the Division of Environmental Health at University of Southern California. Her research focuses on addressing unequal exposures to harmful contaminants that affect the health of working poor and communities of color. Dr. Johnston engages in collaborations with grassroots organizations to conduct community-engaged action-oriented research at USC to support environmental justice. She works towards strong partnership with local organizations, community health promoters, policymakers and residents to address air pollution, upstream oil and gas extraction and incompatible land use. Previously she worked as a community organizer on issues of environmental and economic justice in South Texas. Dr. Johnston received her PhD in environmental sciences and engineering from the University of North Carolina at Chapel Hill, where she studied hazardous waste sites and industrial animal production.

Session 3 Panelist



Pearl McElfish, PhD, MBA, MS Panelist

Associate Director of Community Outreach and Engagement at Winthrop P. Rockefeller Cancer Institute, University of Arkansas for Medical Sciences (UAMS)

Dr. Pearl McElfish serves as the founding Director the Office of Community Health and Research at the University of Arkansas for Medical Sciences (UAMS). Dr. McElfish holds a PhD in public(health) policy, a master's degree in business administration, and a master's degree in community and economic development. She is a certified Project Management Professional and a Certified Community Developer. Dr. McElfish is a professor with faculty positions in the Colleges of Medicine, Nursing, and Public Health. Prior to her 13 years of academic medicine leadership experience, she served outside academia for 15 years in leadership roles in primary, tertiary, and community/population health. Dr. McElfish's research focuses on health systems transformation and reducing health disparities with a focus on both chronic and infectious disease. She is a national and international leader food systems research and methodological research related to the best methods for conducting community-based participatory research and disseminating research results to participants and communities. In addition to her research, Dr. McElfish has led large inter- and intrainstitutional efforts to develop academic programs, graduate medical education, clinical programs, and population health efforts. Dr. McElfish has been nationally and internationally recognized for her work by Johnson and Johnson, Association of American Medical Colleges, Robert Wood Johnson Foundation, and many others. Dr. McElfish has a history of funding from the Centers for Disease Control and Prevention (CDC), the Patient-Centered Outcomes Research Institute (PCORI), the National Institutes of Health (NIH), the United States Department of Agriculture (USDA), the Robert Wood Johnson Foundation, and other private foundations. She has been awarded more than \$150 million in federal, state, and private foundation grants, and she has published more than 230 peer-reviewed articles.

Closing Remarks - Day 1



Patricia Jones, DrPH, MPH, MS, MBA Closing Remarks

*Director, Office of Special Populations,
National Institute on Aging (NIA), National Institutes of Health*

Patricia Jones, DrPH, MPH, MS, MBA, leads the NIA's efforts in stimulating health disparities research related to aging. She is the Director of the Office of Special Populations. In this position, she advances the science of eliminating health disparities, facilitates addressing health disparities through basic, clinical and translational and behavioral and social science research, supports developing initiatives that strengthens NIA's research and training opportunities available to underrepresented persons, including minorities and women, and advises other senior staff on health research related to underrepresented populations. Dr. Jones also directs the NIA Butler-Williams Scholars Program for early career aging researchers and serves as the Executive Secretary for the Task Force on Minority Aging Research (TFMAR), a task force to the National Advisory Council on Aging. Dr. Jones also has a leadership role in UNITE, a NIH initiative to end structural racism in biomedical and behavioral research.

Before accepting this role with NIA, Dr. Jones worked with the National Center for Advancing Translational Sciences (NCATS), where she served as a Health Scientist Administrator (HSA) for the Division of Clinical Innovation and served as the lead for a national strategic management and program evaluation initiative while simultaneously serving as a Program Director and Project Scientist for numerous awards that enhanced recruitment and retention of underrepresented persons in clinical trials, addressed health disparities, promoted Dissemination and Implementation Science, and facilitated Collaboration and Team Science. During her tenure with NCATS, Dr. Jones simultaneously served as NCATS' point of contact for health disparities, Dissemination and Implementation Science, Behavioral and Social Science Research, Community and Patient Engagement, and Program Evaluation. Before joining NCATS, she was a Senior Health Specialist with the National Institute of Allergy and Infectious Diseases (NIAID).

Welcome & Keynote Speakers - Day 2



George Mensah, MD, FACC

Welcome Address Speaker

*Director, Center for Translation Research and Implementation Science (CTRIS)
National Heart, Lung, and Blood Institute (NHLBI), National Institutes of Health*

Dr. George Mensah is a clinician-scientist who currently serves as the Director of the Center for Translation Research and Implementation Science at the National Heart, Lung, and Blood Institute (NHLBI), a part of the National Institutes of Health (NIH). In this role, Dr. Mensah leads a trans-NHLBI effort to advance late-stage translational research and implementation science to address gaps in the prevention, treatment, and control of heart, lung, and blood diseases and the elimination of related health inequities. His goal is to maximize the population health impact of advances made in fundamental discovery science and pre-clinical or early-stage translational research. Dr. Mensah is an honors graduate of Harvard University. He obtained his medical degree from Washington University and trained in Internal Medicine and Cardiology at Cornell. His professional experience includes more than 20 years of public health service between the U.S. Department of Veterans Affairs, the Centers for Disease Control and Prevention (CDC), and the NIH. In addition to his public service, Dr. Mensah had 15 years of experience in direct patient care, teaching, and research at Cornell, Vanderbilt, and the Medical College of Georgia (MCG). He was a full professor with tenure at MCG and is currently a Visiting Full Professor at the University of Cape Town, South Africa. Dr. Mensah has been admitted to fellowships in several national and international societies including the American Heart Association, American College of Cardiology, and the European Society of Cardiology. He is an Honorary Fellow of the College of Physicians of South Africa. He maintains active collaboration with several international groups to advance research on the global burden of diseases and risk factors.



Lisa Cooper, MD, MPH

Keynote Address Speaker

*Bloomberg Distinguished Professor, Equity in Health and Healthcare; Professor of
Medicine, Johns Hopkins*

Future directions for Community-engaged health disparities research

Lisa A. Cooper, MD, MPH is the James F. Fries Professor of Medicine and the Bloomberg Distinguished Professor of Equity in Health and Health Care at Johns Hopkins University Schools of Medicine, Nursing, and Bloomberg School of Public Health. She is also the Founder and Director of the Johns Hopkins Center for Health Equity and Director of the Johns Hopkins Urban Health Institute. Dr. Cooper studies how race and socioeconomic factors shape patient care, and how health systems, with communities, can improve the health of populations with complex social needs. A general internist and social epidemiologist, Dr. Cooper and her team work, in partnership with health systems and community-based organizations, to identify interventions that alleviate health disparities and translate them into practice and policy changes that mean better health for communities. The author of the book, "Why Are Health Disparities Everyone's Problem?" (Johns Hopkins University Press, 2021), Dr. Cooper is a 2007 MacArthur Fellow and an elected member of the National Academy of Medicine. She is a recipient of the Herbert W. Nickens Award for outstanding contributions to promoting social justice in medical education and equity in health care from the Association of American Medical Colleges and the Helen Rodriguez-Trias Social Justice Award from the American Public Health Association. Dr. Cooper is immediate past co-chair of the steering committee for The Community Engagement Alliance Against COVID-19 Disparities at the National Institutes of Health. In September 2021, she was appointed by President Joseph Biden to the President's Council of Advisors on Science and Technology. Dr. Cooper received her Doctor of Medicine degree from the University of North Carolina at Chapel Hill School of Medicine, her Master of Public Health degree from the Johns Hopkins University Bloomberg School of Public Health, and her bachelor's degree in chemistry from Emory University.

Session 4 Panelist



Makeda Williams, PhD, MPH

*Global Health Program Director
National Heart, Lung, and Blood Institute, National Institutes of Health*

Dr. Makeda Williams is the Global Health Program Director for the National Heart, Lung, and Blood Institute (NHLBI). As the global health senior advisor, Dr. Williams provides scientific program leadership on NHLBI's global health research strategy addressing heart, lung, blood and sleep diseases in low- and middle-income countries (LMICs). She collaboratively engages in late-stage translation research, implementation science, and research training activities that build global research capacity. Dr. Williams previously served as Chief of Global Mental Health Effectiveness Research at the National Institute of Mental Health, and International Program Officer at the National Cancer Institute. She received her BA in Psychology from Emory University, MPH in Maternal and Child Health from The George Washington University, and Ph.D. in Health Education/Health Promotion from the University of Alabama at Birmingham. Dr. Williams completed the US Department of Health and Human Services' Emerging Leaders Program, and is a member of the Delta Omega Honor Society in Public Health.



Marcella Nunez-Smith, MD, MHS

Session Chair

Associate Dean for Health Equity Research, Yale School of Medicine

Dr. Marcella Nunez-Smith is Associate Dean for Health Equity Research; C.N.H Long Professor of Medicine, Public Health, and Management; and Director of the Equity Research and Innovation Center at Yale. Her research focuses on health and healthcare equity for marginalized populations with an emphasis on the social and structural determinants of health, the influence of healthcare systems on health disparities, and the advancement of community-academic partnered scholarship. Dr. Nunez-Smith served as Senior Advisor to the White House COVID-19 Response Team and Chair of the Presidential COVID-19 Health Equity Task Force, co-chair of the Biden-Harris Transition COVID-19 Advisory Board and chair of the governor's ReOpen CT Advisory Group Community Committee. An elected member of the National Academy of Medicine, she attended Jefferson Medical College, residency at Harvard's Brigham and Women's Hospital, and fellowship at the Yale Robert Wood Johnson Foundation Clinical Scholars Program.

Session 4 Panelist



Ana Olga Mocumbi, MD, PhD, FESC

Panelist

Cardiologist

Head of the Division of Chronic and Non-communicable Diseases at the National Health Institute in Mozambique and an Associate Professor of Clinical Cardiology at Eduardo Mondlane University (UEM)

Dr. Mocumbi is an Associate Professor of Cardiology at Universidade Eduardo Mondlane in Mozambique, Affiliated Professor at the Department of Global Health at the University of Washington and the Lead Researcher at the Non-Communicable Diseases (NCD) Division at the National Public Health Institute Mozambique (Instituto Nacional de Saúde). Her career focuses on poverty-related NCD, particularly neglected cardiovascular diseases, including epidemiological, clinical and health systems research, particularly task-shifting and the incorporation of new technologies into improvement of care provision and research in low-income settings. Her research interests span from clinical research to education and health management, with special focus on cardiomyopathies, infectious-related conditions such as rheumatic heart disease, heart failure in children, and more recently, women's cardiovascular health. She is an active member of the leadership at the Pan African Society of Cardiology (Co-Chair of the Taskforce for Access to Reproductive Health Services for Women with Cardiovascular Disease), World Heart Federation (Co-Chair of the Working Group on Rheumatic Heart Disease Prevention and Control) and has recently Co-Chaired of The Lancet Global Commission on Non-Communicable Diseases and Injuries of the Poorest Billion. Dr. Mocumbi has published her work in high-impact indexed journals, has collaborations with eminent universities and research institutes all around the globe, is part of editorial boards in high-impact journals, and contributes to several technical and scientific advisory boards.



Marshall Tulloch-Reid, MBBS, MPhil, DSc, FACE

Panelist

Professor, Physician and Endocrinologist and Director of the Caribbean Institute for Health Research (CAIHR) at The University of the West Indies.

A graduate of the University of the West Indies, Professor Tulloch-Reid obtained his Master of Philosophy Degree in Epidemiology from Cambridge University in England in 1997 and the Doctor of Science Degree in Epidemiology from the Netherlands Institute for Health Sciences, Rotterdam in 2003. He pursued training in Internal Medicine at the Howard University Hospital in Washington DC (1997-2000) and subsequently joined the National Institutes of Health Inter-Institute Endocrinology Training Programme in 2000. Initially stationed at the Clinical Center in Bethesda, Maryland, he joined the NIDDK Branch in Phoenix, Arizona where he took part in the longitudinal study of diabetes. He became a Fellow of the American College of Endocrinology in 2005. Professor Tulloch-Reid joined the staff of the CAIHR on his return to Jamaica in 2003 and was appointed Institute Director in 2020. He is currently a PI on 2 NIH sponsored studies that are actively recruiting participants – (i) the Living in Full Health (LIFE) Project, an 8000 person cohort study of Jamaicans to understand the role of genetics, lifestyle and other risk factors on diabetes, cardiovascular disease and cancer and explore reasons for disparities in disease incidence and outcomes among the Black Diaspora and (ii) the Caribbean and South America Team-based Strategy to Control Hypertension (CATCH) Study, to improve hypertension management in Jamaica and Columbia.

Session 4 Panelist



Nikhil Tandon, MBBS, MD, PhD

Panelist

Professor, Department of Endocrinology and Metabolism, All India Institute of Medical Sciences; Head, Capacity Building, Centre for Chronic Disease Control, New Delhi, India; HyTREC India

Professor and Chair of the Department of Endocrinology and Metabolism at the All India Institute of Medical Sciences (AIIMS). Dr. Tandon has worked within the public healthcare system of India for nearly 30 years as a clinician-researcher specializing in cardio-metabolic disease. He has also conducted large scale epidemiology studies in children and adults evaluating the prevalence of cardio-metabolic risk factors and their associations. Dr. Tandon was one of the founding investigators of the CARRS Cohort, established with support from the NHLBI, which has followed nearly 30,000 adults for more than 10 years. In the field of clinical intervention studies, he has been involved in innovative use of technology and quality improvement strategies to facilitate care delivery for people with diabetes and hypertension, keeping in mind the resource constraints of a country like India, but with scope for generalizability in other economies. These strategies include but are not restricted to use of a care coordinator, decision support software, clinic flow modifications, opportunistic screening and task shifting for non-physician health care providers. Dr. Tandon has served on several WHO Expert Groups including the recently constituted WHO Technical Advisory Group on Diabetes (TAG/D).

At the national level in India, he is a member of governmental advisory committees to develop guidelines for chronic disease care in India, chair the Technical Advisory Group of the ICMR Young Diabetes Registry, and a Member of the Technical Advisory Group for the National Program for the Prevention and Control of Cancer, Diabetes, CVD and Stroke.

Session 5 Panelist



Emir Khatipov, PhD NIH Moderator

Program Officer, Center for Translation Research and Implementation Science (CTRIS), National Heart, Lung, and Blood Institute, National Institutes of Health (For Bio See Planning Committee Section)



Philip E. Bourne, PhD, FACMI Session Chair

*Stephenson Founding Dean of the School of Data Science
Professor of Data Science and Biomedical Engineering, University of Virginia
(Former Assoc Dir for Data Science at NIH, now in UVA)*

Prior to Dr. Bourne's current position he was the Associate Director for Data Science (ADDS; aka Chief Data Scientist) for the US National Institutes of Health (NIH) and a Senior Investigator at the National Center for Biotechnology Information (NCBI). In his role as ADDS he led the trans NIH US \$110M per year Big Data to Knowledge (BD2K) research initiative and contributed to data policies and infrastructure aimed at accelerating biomedical discovery. Examples include: establishing the NIH Commons, support for data and software citation and establishing preprints as a supported form of research. Prior to joining NIH, Dr. Bourne was Associate Vice Chancellor for Innovation and Industry Alliances in the Office of Research Affairs and a Professor in the School of Pharmacy and Pharmaceutical Sciences at the University of California San Diego (UCSD). Dr. Bourne is a Past President of the International Society for Computational Biology, an elected fellow of the American Association for the Advancement of Science (AAAS), the International Society for Computational Biology (ISCB), the American Medical Informatics Association (AMIA) and the American Institute for Medical and Biological Engineering (AIMBE). He has published over 350 papers and 5 books garnering over 70,000 citations and co-founded 4 companies. Awards include the Jim Gray Award eScience Award and the Benjamin Franklin Award.

His current research focuses on data science methods applied to systems pharmacology structural bioinformatics and scholarly communication. He has a strong interest in helping the next generation through the Ten Simple Rules series of professional development articles and his work as Dean of one of the few data science schools worldwide where new models of higher education are being emphasized.

Session 5 Panelist



Ali Mokdad, PhD Panelist

Chief Strategy Officer, Population Health, University of Washington and Professor, Health Metrics Sciences, Institute for Health Metrics and Evaluation, School of Medicine

Ali H. Mokdad, PhD, is Professor of Health Metrics Sciences at the Institute for Health Metrics and Evaluation (IHME) and Chief Strategy Officer for Population Health at the University of Washington. Prior to IHME, Dr. Mokdad worked at the US Centers for Disease Control and Prevention. He has published groundbreaking research on local-level disease trends and leading risk factors for poor health. His work on obesity is among the most highly cited in the field.



Irene Dankwa-Mullan, MD, MPH Panelist

Chief Health Equity Officer, Deputy Chief Health Officer, Lead Scientific Officer, Merative (formerly IBM Watson Health)

Dr. Irene Dankwa-Mullan is a nationally recognized industry physician, scientist, thought leader, health equity scholar with over 20 years of diverse regional and national leadership experience in primary care, healthcare systems, businesses, and the community. She is Chief Health Equity Officer and Deputy Chief Health Officer at Merative, formerly IBM Watson Health. IBM created the IBM Watson Health unit, bringing together technologies, data and analytics, that would ultimately make up Merative. She was a member of the IBM Industry Academy, a selected community of pre-eminent leaders to drive innovation and engage in cutting-edge work for the industry. Dr. Dankwa-Mullan was formerly Director, Office of Research Innovation and Program Coordination, and Deputy Director for extramural scientific programs at NIMHD, NIH. While at the NIH, she was active on several key strategic boards and committees, including many that were cross-sectoral and transdisciplinary promoting health equity and health in all policies.

She is the lead editor of the resource textbook 'The Science of Health Disparities Research' published by Wiley, designed to help researchers and the community identify relevant questions, design approaches, and conduct studies to advance the discipline. This was a collaborative effort with NIMHD scientists and thought leaders including community advocates. She serves on various advisory committees to promote public health, health equity, as well as measures impacting health disparities. Dankwa-Mullan has published widely on health disparities, including on the integration of health equity, artificial intelligence and machine-learning, ethical AI and social justice principles into data science methods and technology development lifecycle.

Session 6 Panelist



Desiree Salazar, PhD

NIH Moderator

*Diversity, Equity, and Inclusion Coordinator for Extramural Programs
National Heart, Lung and Blood Institute (NHLBI), National Institutes of Health (NIH)*

Dr. Salazar provides leadership in DEI activities across NHLBI and manages a variety of programs including Diversity and Re-Entry/Re-integration Supplements, MOSAIC K99/R00 Postdoctoral Career Transition Awards to Promote Diversity, Short-Term Education Program to Enhance Diversity in Health-Related Research, and the capacity building Support for Research Excellence (SuRE) and SuRE First Award programs. She also serves as a Project Scientist for the NIH Common Fund Faculty Institutional Recruitment for Sustainable Transformation (FIRST) program.

Before joining NHLBI, Dr. Salazar was a program director at the National Institute for General Medical Sciences (NIGMS) within the Division of Training, Workforce Development, and Diversity, where she managed a variety of training programs from the undergraduate to postdoctoral level. She managed research grants in the Division of Genetics and Molecular and Developmental Biology in stem cell biology and regeneration. Additionally, Dr. Salazar was the Director of the NIGMS intramural Postdoctoral Research Associate Training program.

Prior to joining NIGMS in 2016, Dr. Salazar was a Scientific Program Manager at the American Society for Cell Biology (ASCB). Dr. Salazar earned a B.S. in Neuroscience from University of California, Los Angeles and a Ph.D. in Biological Sciences from UC Irvine. She conducted postdoctoral studies at UC San Diego as part of the NIH funded IRACDA program.



Monica Hooper, PhD

Session Chair

*Deputy Director of the National Institute on Minority Health and Health Disparities
(NIMHD) National Institutes of Health (NIH)*

Dr. Hooper is an integral member of the Institute's leadership, working closely with the Director to oversee all aspects of the institute and to support critical scientific initiatives and recommendations to improve minority health, reduce health disparities, and promote health equity. Dr. Webb Hooper also co-leads Working Groups for NIH-wide initiatives to understand and address the disproportionate impacts of COVID-19 among populations with health disparities.

Dr. Webb Hooper is an internationally recognized translational behavioral scientist and licensed clinical health psychologist. She has dedicated her career to the scientific study of minority health and racial/ethnic disparities, focusing on chronic illness prevention and health behavior change. Dr. Webb Hooper completed her doctorate in clinical psychology from the University of South Florida, internship in medical psychology from the University of Florida Health Sciences Center, and her Bachelor of Science from the University of Miami.

Session 6 Panelist



Harolyn M.E. Belcher, MD, MHS

Panelist

Vice President and Chief Diversity Officer, Director of the Office of Health Equity Inclusion and Diversity, and Senior Director of the Center for Diversity in Public Health Leadership Training at Kennedy Krieger Institute

Dr. Belcher is a double-boarded Neurodevelopmental Pediatrician who is a Professor of Pediatrics at The Johns Hopkins University School of Medicine. She is jointly appointed in the Department of Mental Health at Johns Hopkins Bloomberg School of Public Health. Dr. Belcher was the former Director of Research for the Family Center - a community-based mental health center that provides evidence-based mental health treatment focusing on children with a history of abuse and neglect and exposure to parental risk factors, poverty, racism, and community and domestic violence. Dr. Belcher currently directs/co-directs two CDC public health leadership programs (undergraduate and graduate level), an HRSA-funded MCH undergraduate pathway training program, and an Office of Minority Health graduate health equity fellowship. To date, over 700 students participated in these public health leadership and research development programs. Dr. Belcher is the co-chair Health and Human Services Committee of the Baltimore City Social Determinants of Health Taskforce. She served on the National Academy of Sciences, Engineering, and Medicine (NAS) Board on Children, Youth, and Families and the NAS Forum on Child -Cognitive, Affective, and Behavioral Health. Dr. Belcher was elected to Alpha Omega Alpha Medical Honor Society at Howard University College of Medicine, her alma mater, for her "unparalleled work as a teacher and mentor to students." She received the Johns Hopkins Institutions Diversity Recognition Award, the Association of University Centers on Disabilities, Multicultural Council Leadership in Diversity Award, and Morgan State University ASCEND Program Exemplary Mentor Award. Dr. Belcher is married and mother of two adult offspring and grandmother of three grandchildren.



Marie Plaisime, PhD, MPH

Panelist

FXB Health and Human Rights Fellow and National Science Foundation (NSF) post-doctoral fellow, Harvard University

Dr. Marie Plaisime is a medical sociologist and a joint FXB Health and Human Rights Fellow and National Science Foundation (NSF) post-doctoral fellow at Harvard University. Her research investigates the mechanisms through which health is racialized by examining racial bias, race-based medicine, algorithmic bias, social movements, and health policy. Her work assesses the complex interactions between race and health and the roles that physicians, nurses, and patients play in shaping health equity. Dr. Plaisime applies critical quantitative, computational, and mixed methodological (QCM) tools to detect, examine and quantify how structural racism in medicine jeopardizes healthcare delivery, access, and quality. Currently, she serves as Principal Investigator on an NSF-funded project entitled, Moving Beyond Bias: Structural Competency in Medical Education, which seeks to enhance theories and methodological approaches on structural competency, bias, and patient-provider interactions to reduce bias and race-based learning across medical institutions. Dr. Plaisime completed her PhD in Medical Sociology at Howard University and her MPH from the Drexel University Dornsife School of Public Health. She is a Robert Wood Johnson Foundation (RWJF) Health Policy Research Scholar (HPRS) and also an affiliate fellow with The Penn Program on Race, Science and Society (PRSS) working with professor Dorothy Roberts. Her professional experiences include research at the Association of American Medical Colleges (AAMC), National Institutes of Health (NIH), and the Department of Health and Human Services (HHS). Her work has been published in the Lancet, Journal of General Internal Medicine, and the Journal of the American Medical Association, among others.

Session 6 Panelist



Giselle Corbie, MD, MSc

Panelist

Kenan Distinguished Professor of Social Medicine, Director, Center for Health Equity Research; Professor of Internal Medicine, University of North Carolina

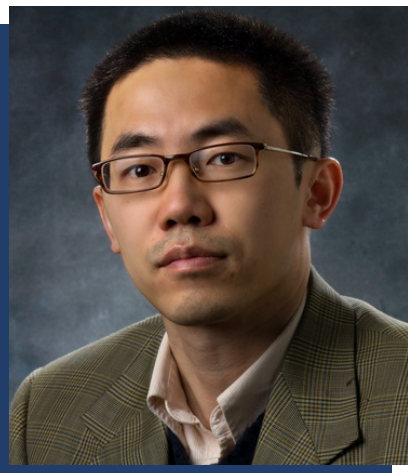
Dr. Corbie is a Kenan Distinguished Professor of Social Medicine and Medicine, UNC School of Medicine, and Director of the UNC Center for Health Equity Research.

Dr. Corbie is internationally recognized for her scholarly work on the practical and ethical issues regarding involvement of minorities in research to address racial disparities in health.

Dr. Corbie has led local, state, and national research and policy efforts to advance health equity. She has effectively developed and conducted research across systems to address the health needs of vulnerable populations with the goal of eliminating health disparities, while providing support to pre-doctoral, postdoctoral and junior faculty trainees. A talented convener of collaborative, cross-sector teams and a highly sought-after speaker, Dr. Corbie leads programs to help leaders and teams achieve the transformational structural change needed to advance equity. In 2018, she was elected to the National Academy of Medicine for her ground-breaking contributions toward achieving community and population health equity.

She has served in numerous state and national advisory committees. She has been the principal investigator of grants funded through the National Institute of Health, National Heart Lung and Blood Institute, the Robert Wood Johnson Foundation, the National Center for Minority Health and Health Disparities, the National Institute of Nursing Research, and the National Human Genome Research Institute.

Closing Remarks



Xinzhi Zhang, MD, PhD, FACE Closing Remarks

*Chief of Health Inequities and Global Health Branch at the Center for Translation Research and Implementation Science (CTRIS)
National Heart, Lung, and Blood Institute (NHLBI), National Institutes of Health (NIH)*

Dr. Zhang is the Chief of Health Inequities and Global Health Branch at the Center for Translation Research and Implementation Science at the National Heart, Lung, and Blood Institute (NHLBI), part of the National Institutes of Health (NIH). Dr. Zhang has broad research interests that include clinical epidemiology, health services research, data science, health informatics, and their applications to promote health equity nationally and globally. He is a lieutenant commander in the U.S. Public Health Service Commissioned Corps, an elite group of public health leaders who respond to national health crises.

Before joining NHLBI, Dr. Zhang was a program director in the National Center for Advancing Translational Sciences (NCATS) Division of Clinical Innovation, where he managed a portfolio of Clinical and Translational Science Awards (CTSA), including overseeing the CTSA National Center for Data to Health (CD2H). During the COVID-19 pandemic, CD2H initiated National COVID Cohort Collaborative (N3C), the first-ever nationally centralized electronic medical record data openly accessible for the clinical and research community to use for studying COVID-19 and for identifying potential treatments. Dr. Zhang was the NCATS lead on rural health and health equity and currently co-chairs the NIH Rural Health Interest Group. He was also the lead for the diversity and re-entry research supplements program.

Dr. Zhang joined NIH in 2012 as a program director in the National Institute on Minority Health and Health Disparities' Division of Extramural Scientific Programs where he provided leadership for scientific program development and project management on minority health and health disparities research. He spearheaded the development of research initiatives including Multilevel Chronic Disease Prevention, Simulation Modeling and System Science, Enhancing Diversity in Biomedical Data Science, and Social Determinants of Health Collection using the PhenX Toolkit.

Prior to that, Dr. Zhang had joined the National Center for Infectious Diseases' Office of Surveillance at the Centers for Disease Control and Prevention (CDC) in 2003 as a Steven M. Teutsch Prevention Effectiveness Fellow. His pandemic preparedness tool, FluSurge, is widely recommended (e.g. by WHO/PAHO, Johns Hopkins University) and used (e.g., by STAT, countries like Spain) to estimate surges in demand for hospitalbased services during the COVID-19 pandemic. From 2005 to 2012, he was an epidemiologist in CDC's National Center for Chronic Disease Prevention and Health Promotion's Division of Diabetes Translation and was instrumental in establishing the vision and eye health program at CDC.



National Heart, Lung,
and Blood Institute